

# Results from the Fall of Man

As you have seen, the elements that make up the Garden of Eden story can be telling us much more than the traditional story presented like a fairy tale. In the same way, the results from this redefined story also gives us more to consider. While it is true that this fall separated the spiritual relationship between man from God, this separation also manifested itself on the physical plane as well. This is what we are going to understand next.

## A Parallel Dimension



**"That which is has already been, and what is to be has already been: and God requires an account of what is past"**

The implication from this scripture tells us that God in his domain is outside of linear time. From his perspective, all of mankind's history on the linear plane is already finished! It is not that God simply contemplates what he is going to do, it has already been done. This is why the Bible's recorded prophecies are 100% accurate. It is actually the entire recorded his-

tory of mankind from beginning

to end. As you project this idea further you are left with the realization that if God's domain exists outside of linear time and is complete within itself, then we who are in this earthly plane are separated by time as well as space from the eternal realm: heaven. This would be the definition for a dimension. If both are existing simultaneously, Heaven and Earth are actually parallel dimensions!

This idea is even strengthened by the words of Jesus.

his trial, He was asked if he were a King. A baited question Jesus answered very carefully,

**" My Kingdom is not of this earth..."**

Jesus was not proclaiming himself to be an alien! The Greek

word "*Kosmos*" for our English word world, literally means the ordered arrangement of this entire material universe! That my dear reader is the description of a dimension. Jesus was saying that HIS KINGDOM was not of this DIMENSION!

As Jesus stood before Pilot at



# Missing the Mark



Missing the mark is a mid-evil archery definition for a once commonly used word, "SIN". Today the word sin is associated with judgment on a persons moral character. This however is inaccurate from the original intention. To miss the mark is to help define the concept of parallel dimensions. The Bible says that we, (everyone who is a resident on this linear earth) have missed the mark and that we will receive the reward of that missed mark, death. (Romans 3:23) It has nothing to do with our moral character because entrance into God's dimension does not depend upon an individuals actions.( Eph 2:8) Are you, like many surprised to hear that? Our entrance into heaven, the correct dimension, depends upon faith in God's graceful provision, Jesus Christ as the Lamb of God. The term Sin, was used in describing the fact that we are all a part of this second rate fallen dimension. Because of that, we are destined to follow and live by this dimensions standards. We in our own strength, and good intentions cannot find a way out. We are helpless to escape. Events in the Garden of Eden created a

literal paradox by one man, Adam, that literally put a rip into the space time continuum. It is only logical then to realize that the same but opposite of the Eden event would have to happen to undo this paradox. It is also logical to realize that only one person could accomplish that for the rest of us and that

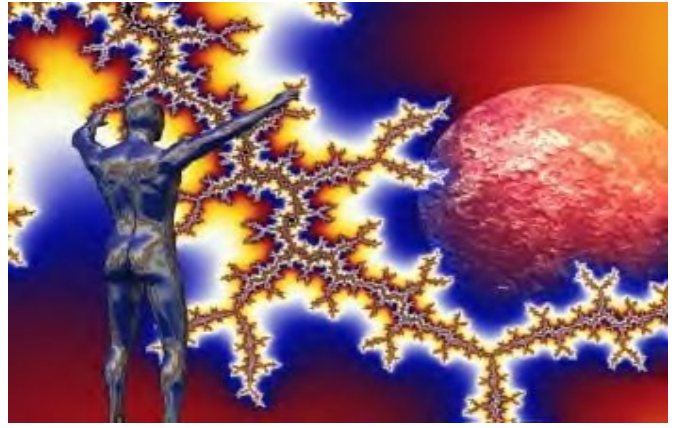
would be God himself. Only the creator would have the kind of power to overrule time and space.

At the end of the movie Armagagedon, the hero made a decision to sacrifice his own life in order to save the rest of the world from an oncoming comet. Mission accomplished! He dies but the whole earth is saved. Anyone would realize that this man would be immortalized and honored forever for such valor and personal sacrifice. That is exactly what Jesus the Messiah did for us and yet the world scoffs in unbelief and settles for every other alternative. Sin means to miss the mark. That Mark is God's perfect kingdom and his ways, existing in the eternal realm and translated out as the tree of Life. Adam and Eve chose the other tree, The tree of knowledge translated into a lesser dimension. We were stuck in this dimension until God himself came and undid the paradox at Calvary. In this parallel dimension created by the fall in Eden, our environment changed from the original intention provided for mankind by God. In addition to a physical change in this lesser dimension, our physical bodies also changed from the perfect intended one God provided. We will next see that blood was a part of getting us into this mess and another blood would get us out as a means of fixing this paradox..

## A Physical Change



**Mankind was made to be eternal and live with God in his perfect eternal realm. The wrong choice put mankind into this lesser linear dimension as a "quarantine" bound by time and destined to a physical death. Understanding this, it is only logical to see that mankind's physical nature changed to fit the new environment.**



We will now look at some scriptural evidence to this change in regards to blood. Before the fall, Adam said of Eve when she was created,

" This is now bone of my bones and flesh of my flesh" Genesis 2:23

Blood was not mentioned because it probably was not included at that time. There is evidence that this mortal linear existence is bound by a physical blood system. The Old Testament Law states

"For the life of the flesh is in the Blood" Lev17:11

Life here means the frail mortal life, it is bound by the existence of a blood system. Blood is the only dietary law carried over into the New Testament

times that remained forbidden to consume. After his

death and resurrection, Jesus told his disciples as they first saw him thinking he was a ghost:

" Look at my hands and feet. It is I myself! Touch me and see: a ghost does not have flesh and bones, as you see I have." Luke 24:39

In His resurrected bodily form, Jesus proclaimed he had a physical nature and not just spirit but that this did not include a blood system. This omission is significant as Paul further defines this same thought for us to understand.

"...**that flesh and blood cannot inherit the kingdom of God**: neither does corruption inherit incorruption. Behold, I show you a mystery; We shall not all sleep, but we shall all be changed,

In a moment, in the twinkling of an eye, at the last trump: for the trumpet shall sound, and the dead shall be raised incorruptible, and **we shall be changed**. For this corruptible must put on incorruption, and this mortal must put on immortality. 1 Corinthians 15:50-53

The implications from this text of scripture are pretty conclusive. The reason this body of flesh and

blood must die is because it cannot be a part of heaven, it is second rate or corrupted as stated in the above scripture. Even those alive at the second

coming will need to be changed. This change is not merely one of physical into spirit as too many assume, it includes a physical essence as well. Paul further explains this :

" There are also celestial bodies, and bodies terrestrial..."1 Corthians 15:40

Another interesting clue to this concept is the Hebrew word for blood. It is the word DAM! Yes and it is in this sense that we have all been Damned or blooded as in the very name of Adam. This consistency is not coincidental by no means.

The events in Eden created this altered second rate dimension and a second rate physical existence. We are in quarantine **but...** The same but opposite of Eden happened 2,000 years ago at Calvary. This sacrifice undid the results of the Eden event on the spiritual plane and very soon at the return of Christ to this earth, it will be achieved on the physical plane as well.

Hebrew Law stated that: "Without the shedding of blood there is no remission" Hebrews 9:22 That is why one man, God himself from the eternal dimension, would have to live an entire life in this fallen dimension, obeying the laws and ways of the eternal dimension. Successfully doing this, the perfect life of Jesus becomes the sacrifice that would not be subject to the rules of this dimension and paradox is undone on the spiritual plane. The next two scriptures confirm this for us.

"In whom we have redemption through his (Jesus) blood, forgiveness of sin, according to the riches of his grace." Ephesians 1:7

"For by one man's disobedience many were made sinners (missing the mark) so by the obedience of one, shall many be made righteous." Romans5:19

A deeper understanding of the characters and events of Eden gives us a Biblical model that explains both the spiritual and the physical changes that took place as the result of this fall . A fairytale like story becomes a logical story filled with a physics and mechanics that could only begin to be understood in our day. With this basic foundation laid, you will now see how this Biblical model

begins to explain Aliens and UFOs. First we also have to understand some ancient history and the first prophecy in the Bible to see that some events today happened long ago.

We are at the end of the beginnings hall so we will turn right into the Unknown History room for a quick view of a past you won't see in any documentary but you can read about in the Bible and other ancient texts.